



User Guide

iPoint - Server

PresentationPoint

Table of Contents

1	CONTROL THE SERVER PROCESS.....	3
1.1	START THE SERVER	3
1.2	STOP THE SERVER	5
2	CONFIGURE THE SERVER.....	8
3	FIREWALL	12
4	SHARED FOLDER FOR MULTIMEDIA FILES.....	15
4.1	INTRODUCTION	15
4.2	IPOINT SERVER AND IPOINT SCHEDULER ARE INSTALLED ON THE SAME COMPUTER	15
4.3	IPOINT SERVER AND IPOINT SCHEDULER ARE INSTALLED ON DIFFERENT COMPUTERS	16
4.4	SETTING UP A SHARED FOLDER	16
5	LOGGING	18
5.1	EVENT VIEWER	18
5.2	LOGFILE	20
5.3	SCHEDULER	21
5.4	THUMBNAILS.....	22

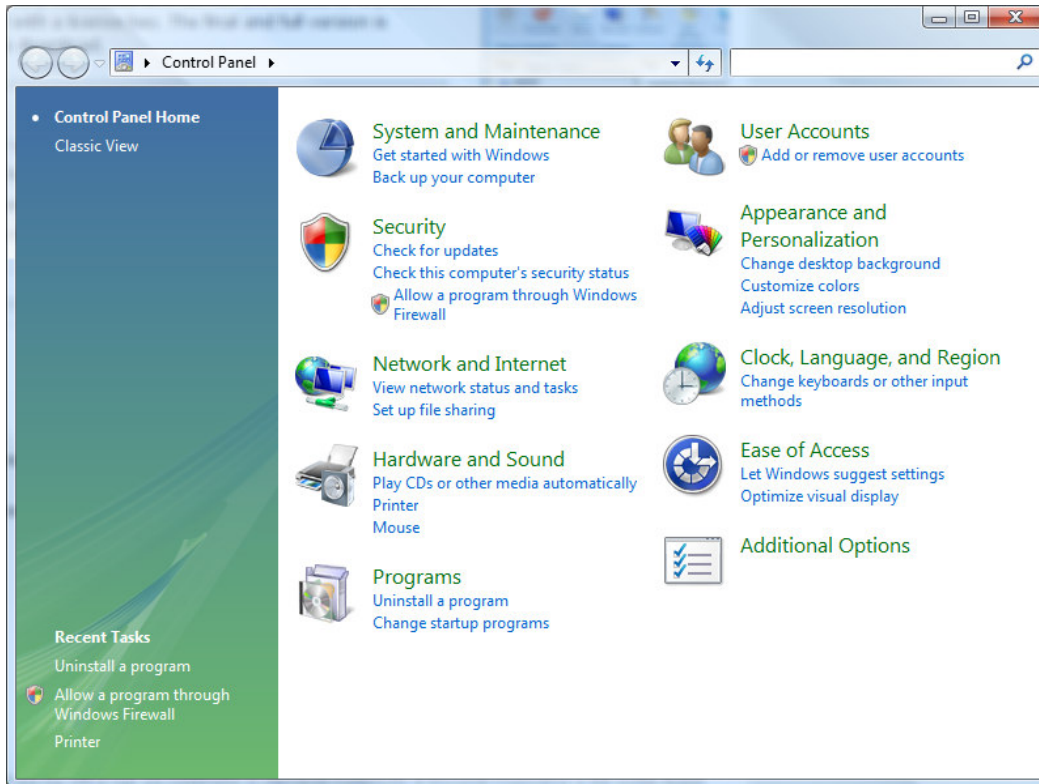
1 Control the server process

This topic will explain how to start and stop the server process.

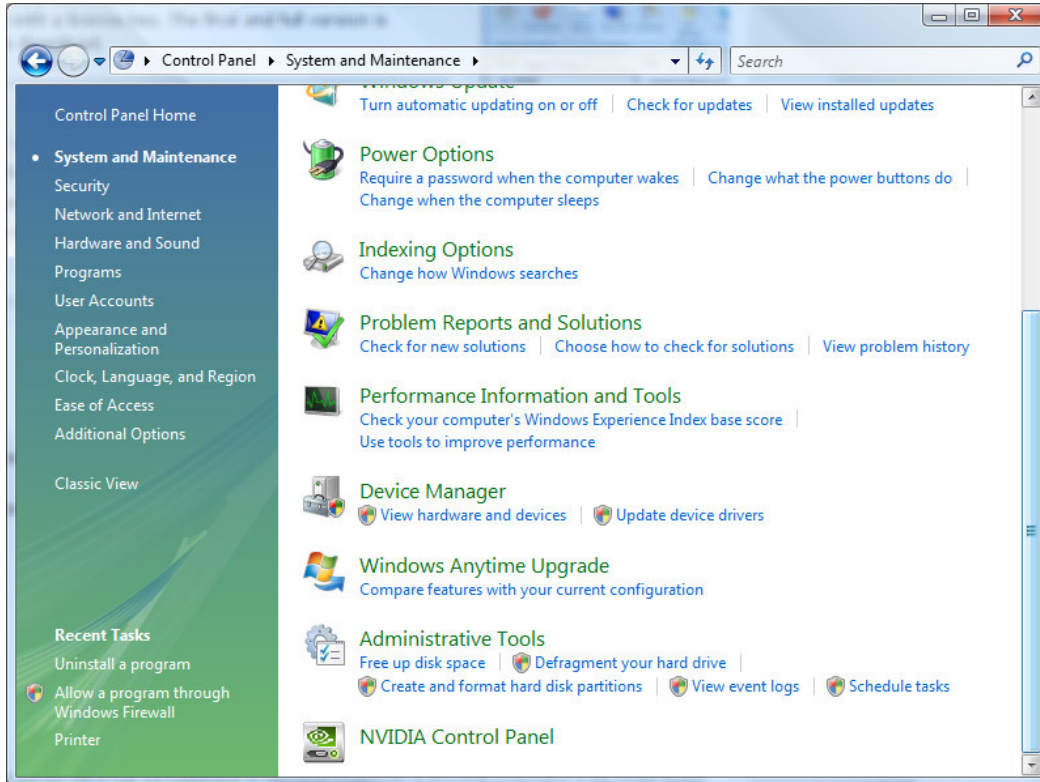
1.1 Start the server

By default the server process is already running after installation. Also it will be started automatically after a system reboot.

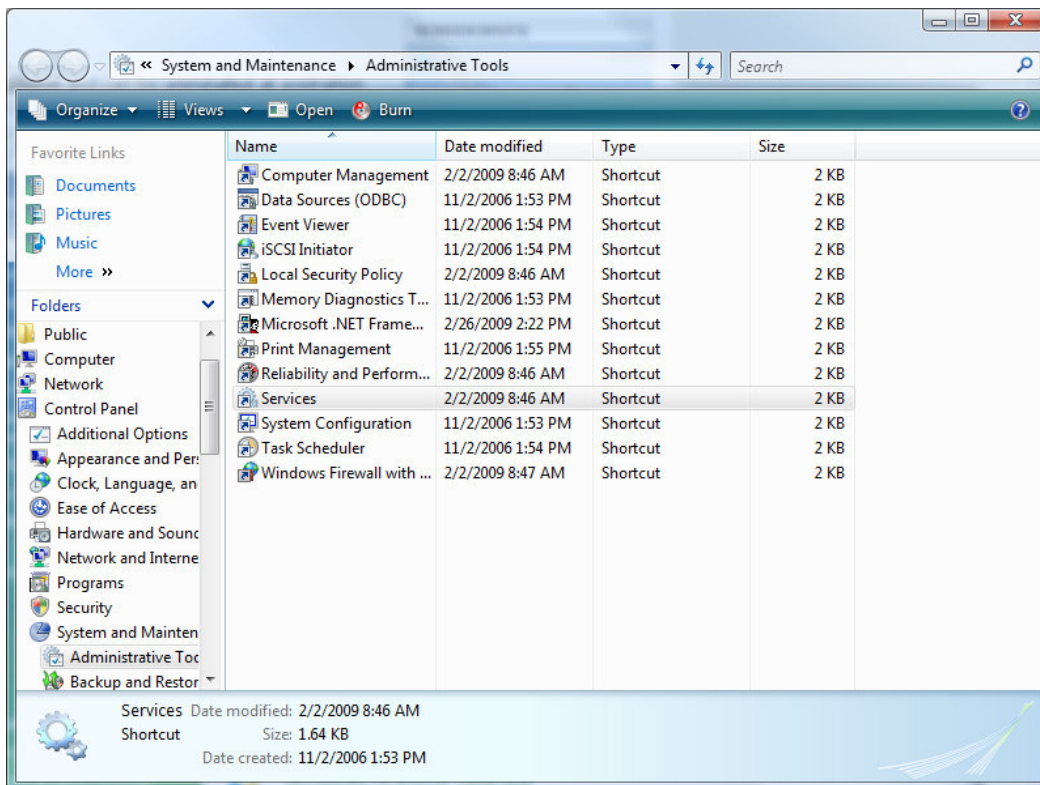
Click Start > Control Panel.



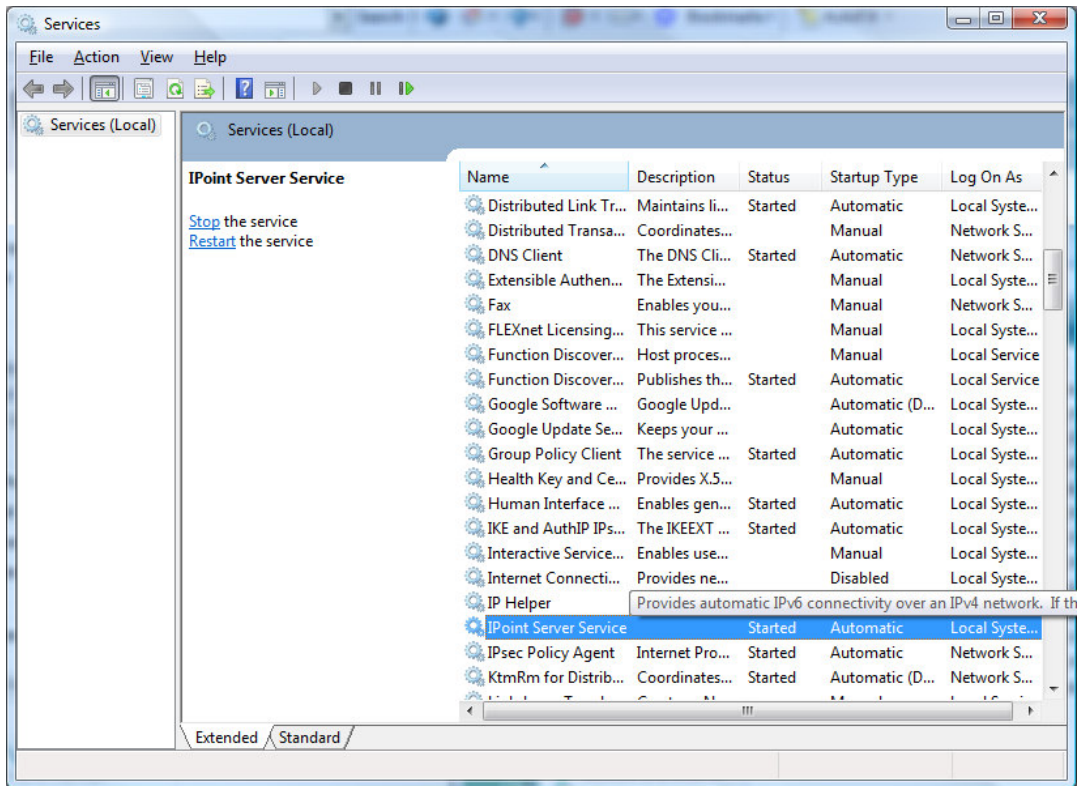
Click on System and Maintenance.



Click Administrative Tools.



Double click Services.

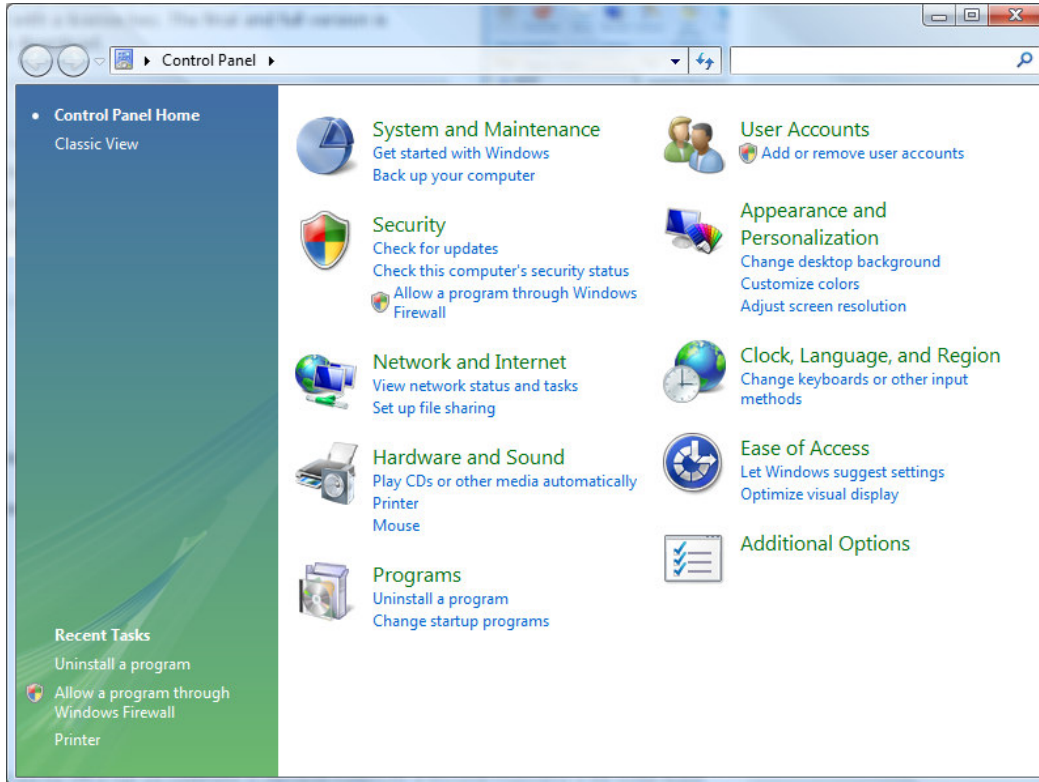


Locate the iPoint server service entry in the list. Right click the service and choose Start from the menu.

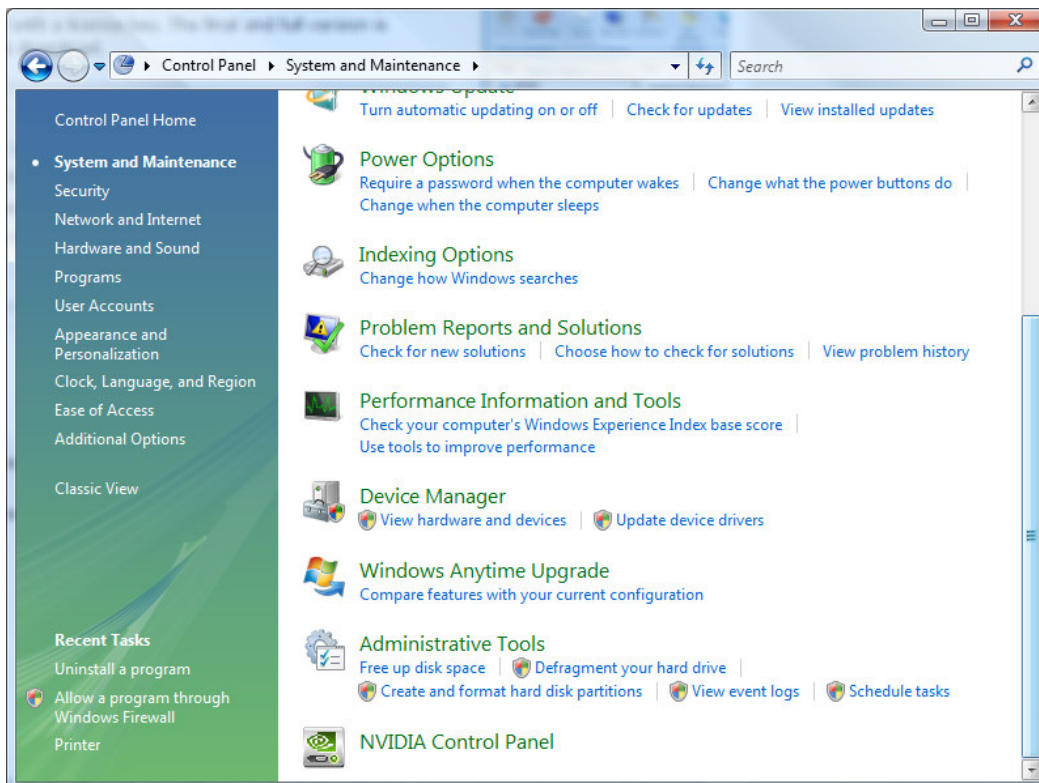
Note: To modify the starting option of the service, go into the service properties by right clicking the service. Choose Properties from the popup menu. The Startup type can be set to automatic, manual or disabled. Default value is Automatic. If you switch it to manual then you are responsible to start it manually.

1.2 Stop the server

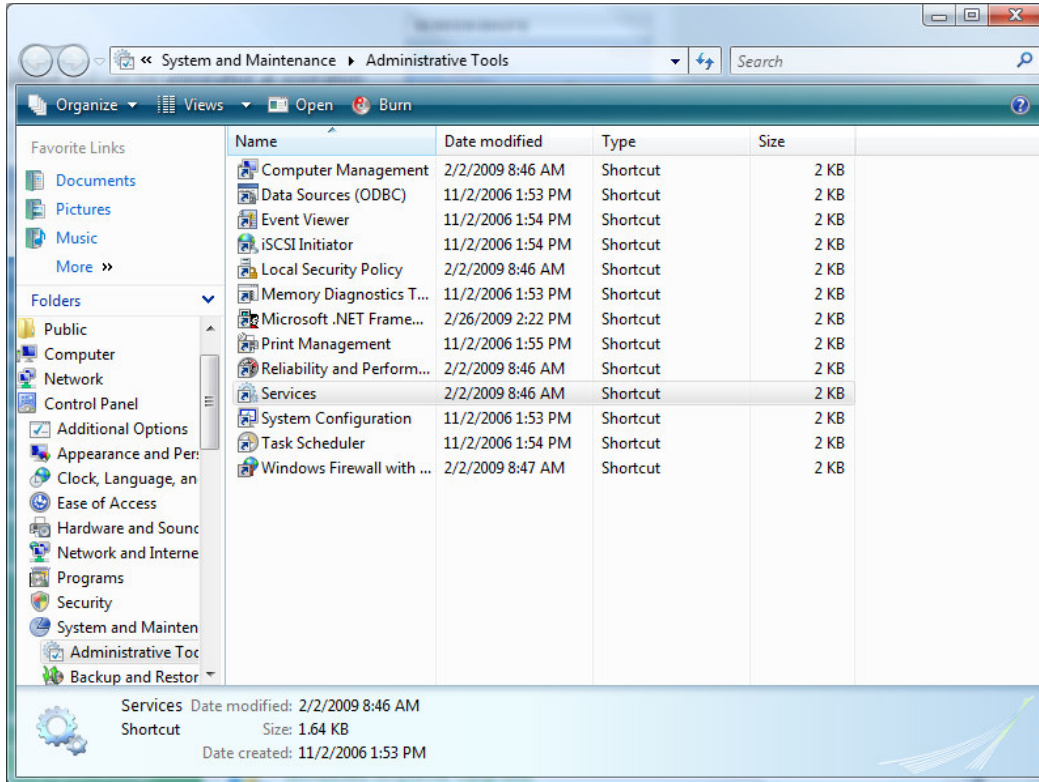
Click Start > Control Panel.



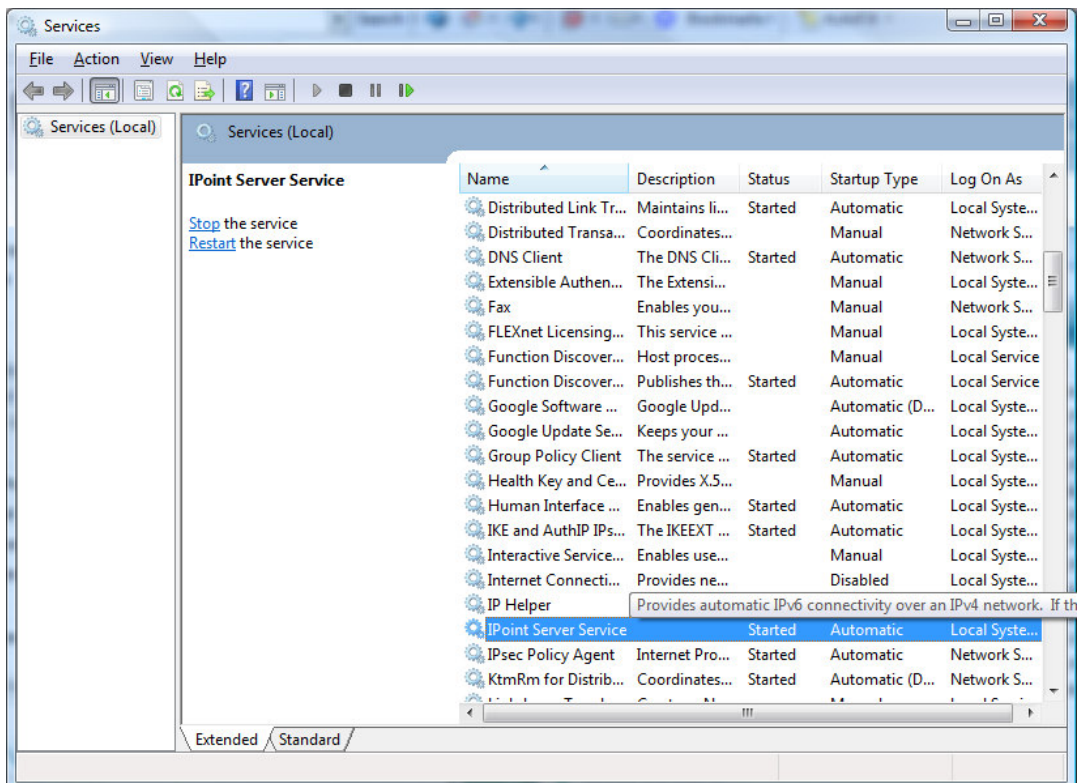
Click on System and Maintenance.



Click Administrative Tools.



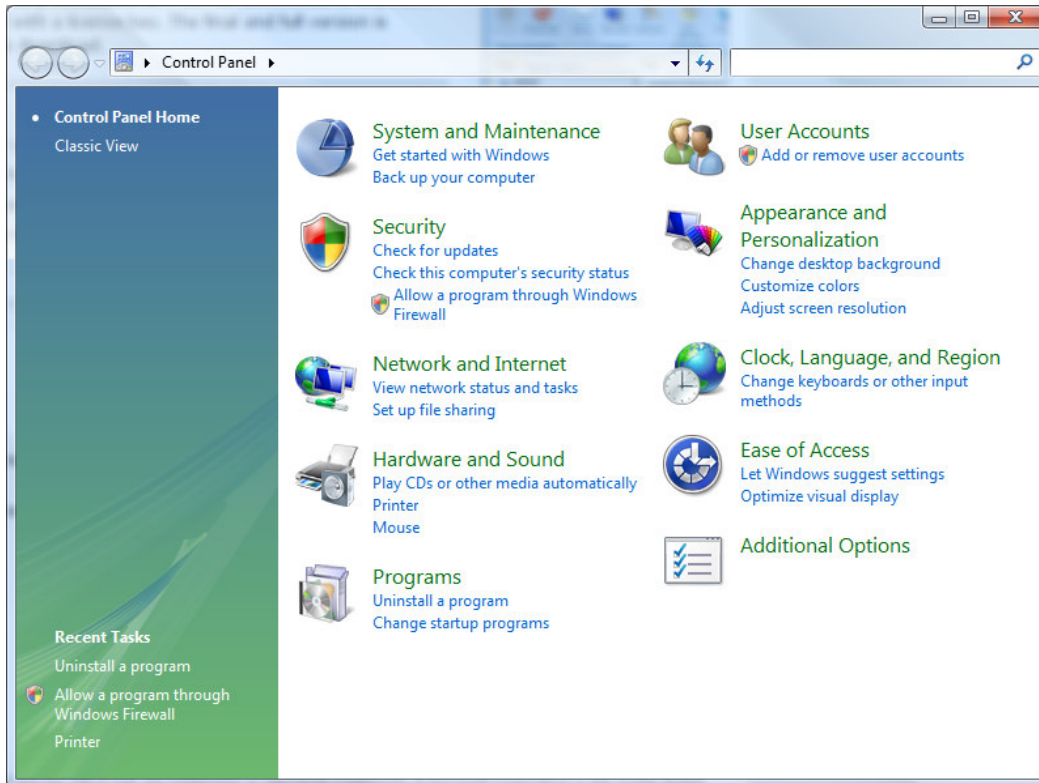
Double click Services.



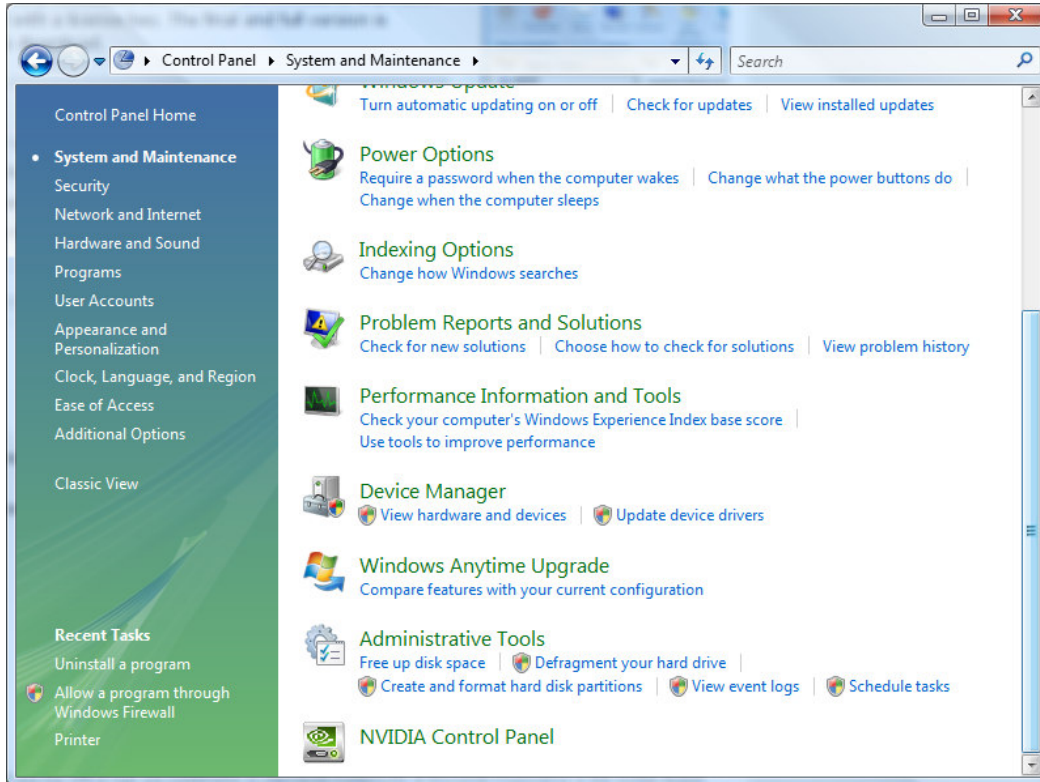
Locate the iPoint server service entry in the list. Right click the service and choose Stop from the menu.

2 Configure the server

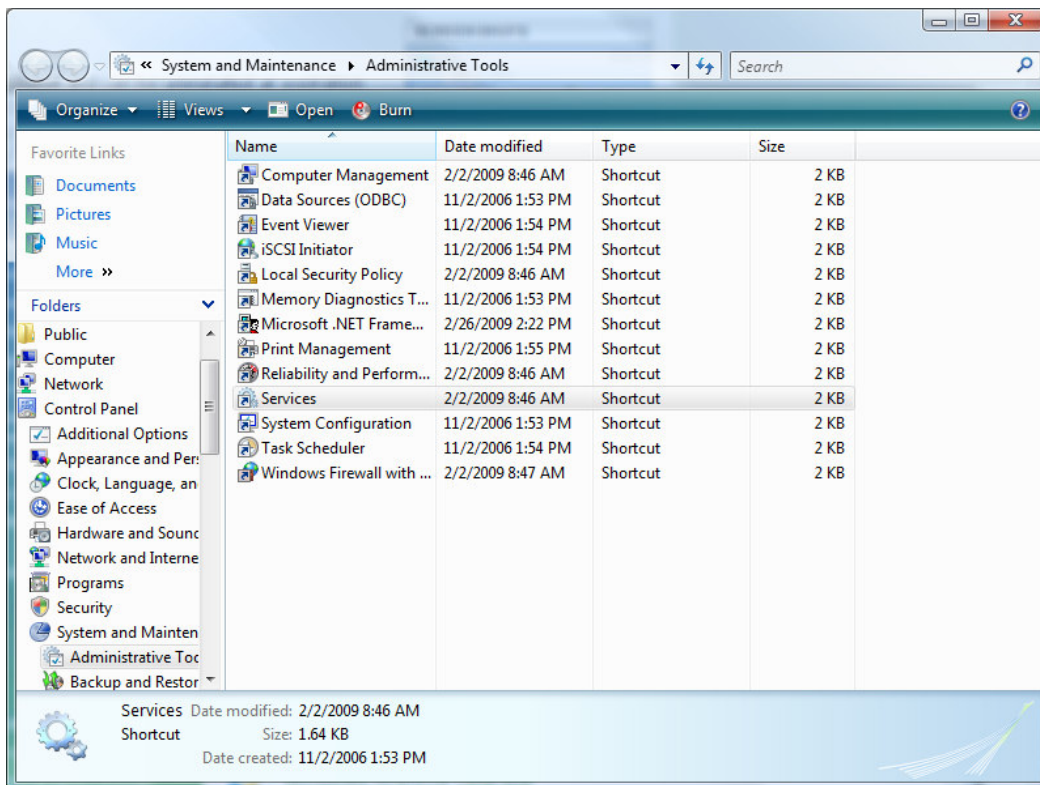
Click Start > Control Panel.



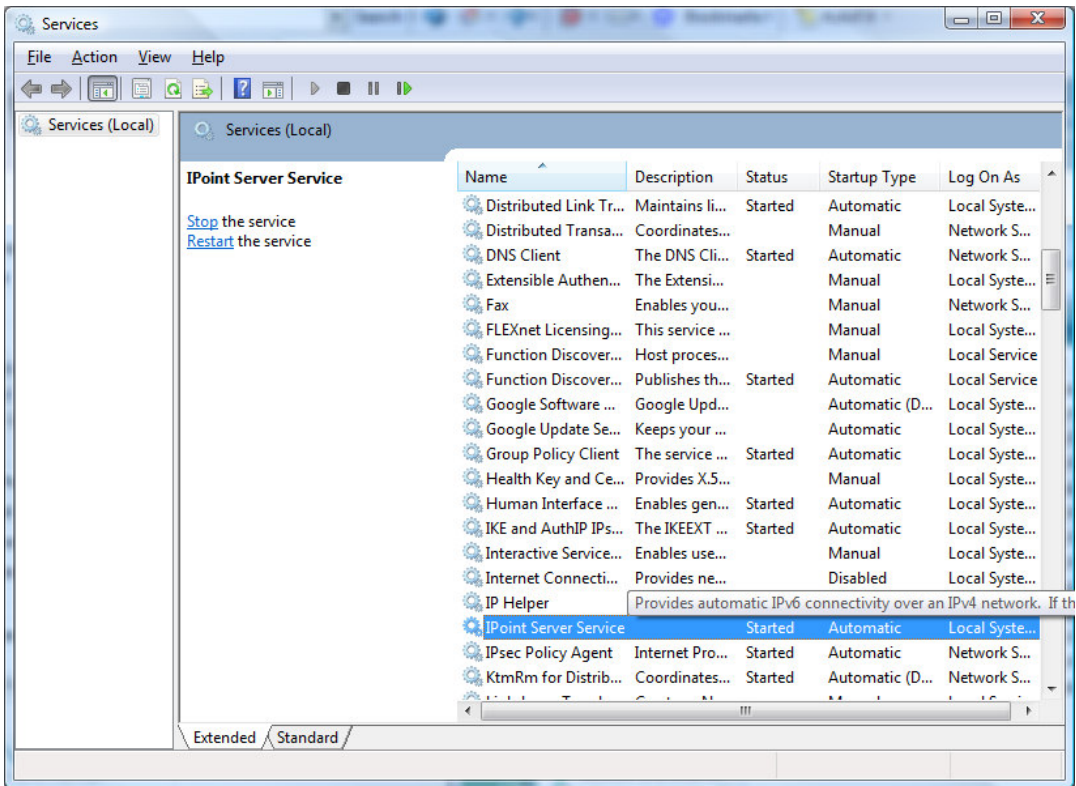
Click on System and Maintenance.



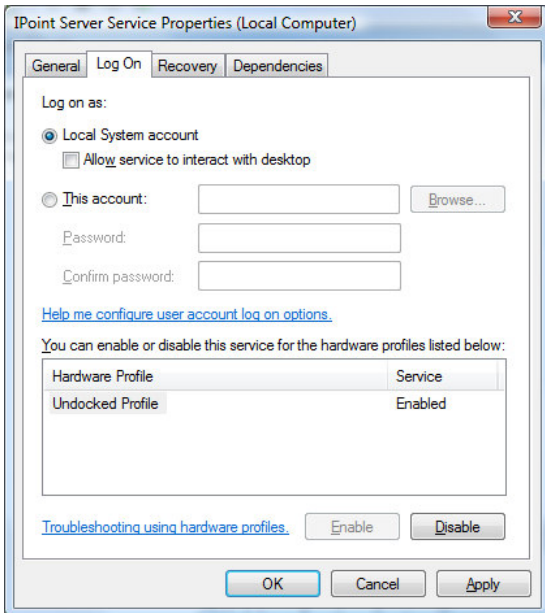
Click Administrative Tools.



Double click Services.



Locate the iPoint server service entry in the list. Right click the service and choose Properties from the menu. Select the Log On tab.



By default the service is running as Local System account. This implies that the service process only has access rights to local files on this machine. With this option enabled you can only use local files when you add multimedia files to your playlists.

Note: By default the server can only access files located on this computer. Neither from any other computer nor from network shares.

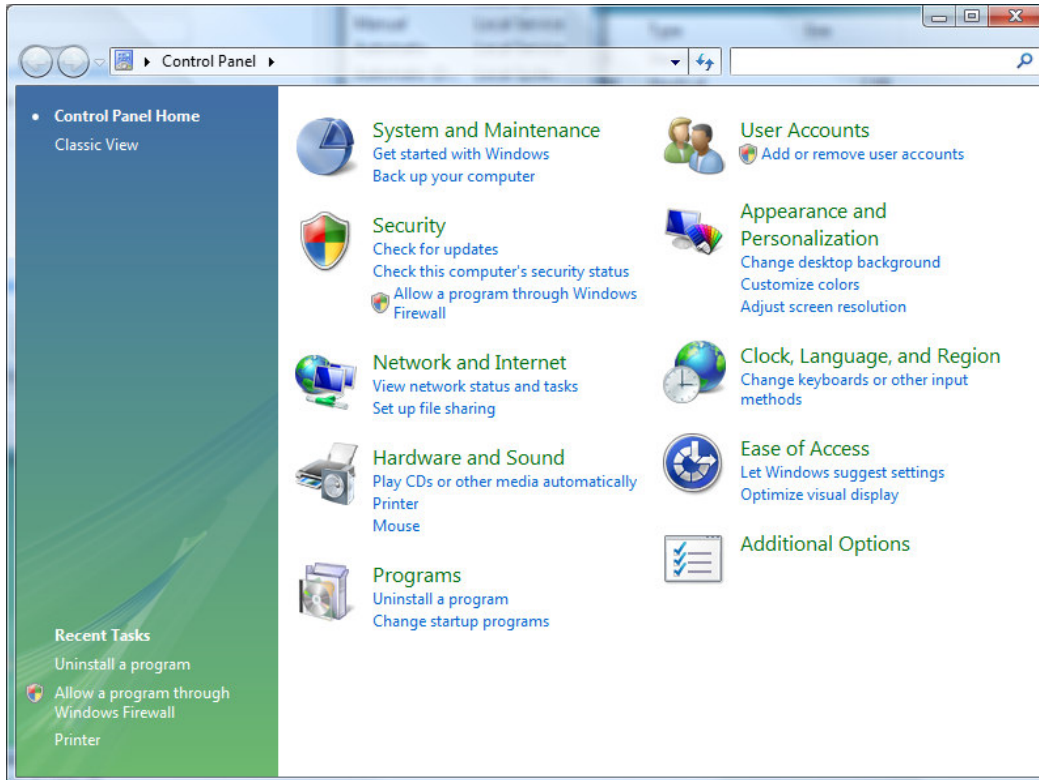
If you want to use remote files from another computer - via UNC notation or mapped drives - then you will have to enter a valid username and password of a user that can access those network resources.

To do this check the This account option and enter a valid username and password. Hit OK to apply the changes. To take these changes into account you will have to restart the service. This can be done from the services menu.

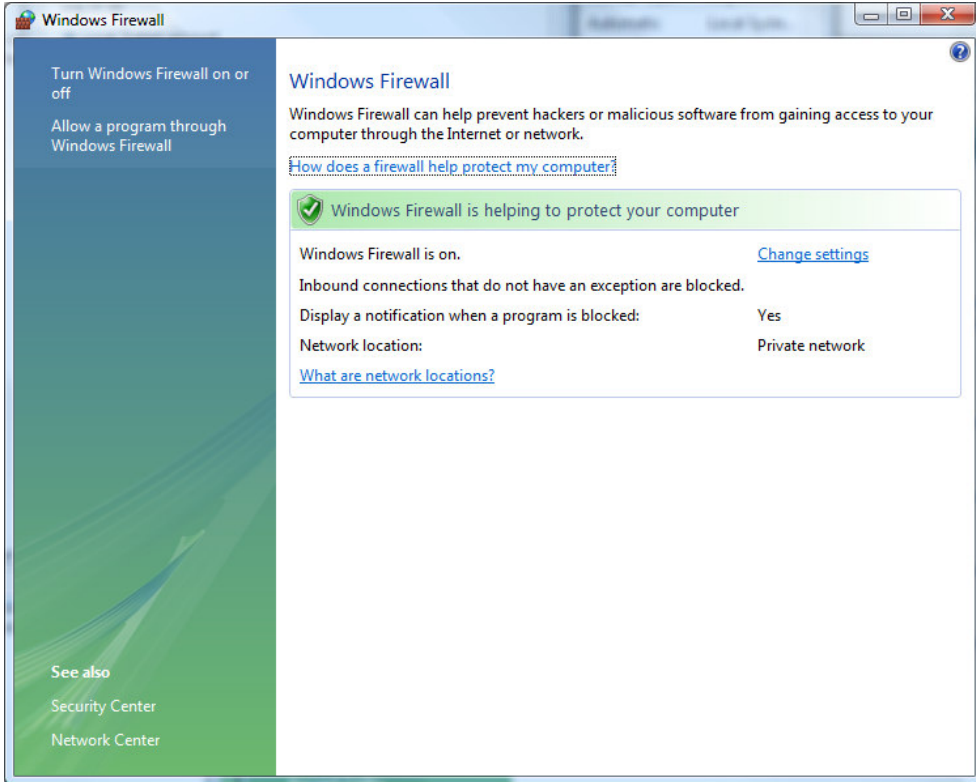
3 Firewall

If you have a firewall in place, please make sure that communication over your chosen TCPIP port is allowed.

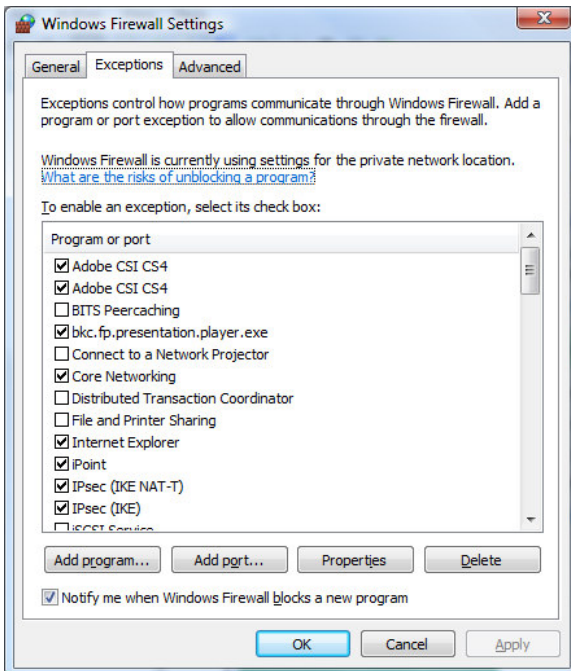
Click Start > Control Panel and Click Security.



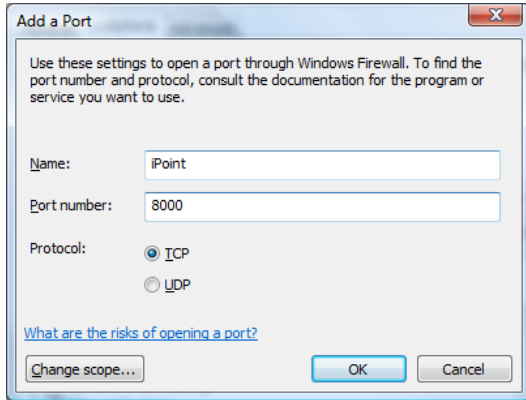
Click Windows Firewall



Click Change settings



Select the Exceptions tab and click Add port.



Give a name to the port e.g. iPoint and enter the chosen port number during the installation. The default portnumber is 8000.

Hit OK twice to confirm the changes.

Your system is now ready to accept and process remote calls to the iPoint server.

4 Shared folder for multimedia files

This topic explains why and how to set up a shared folder that contains your multimedia files that is used in the playlists.

4.1 Introduction

When you use the scheduler to create playlists, you will add multimedia files to your playlist for local play back on the iPoint players. These files should be available to the iPoint server and iPoint scheduler process. The folder containing the files is typically stored in a shared folder so that all users of a given group can access and upload files.

There are 2 scenario's possible:

- Simple installation; the iPoint server and iPoint scheduler are installed on the same computer.
- Complex installation; the iPoint server and iPoint scheduler are installed on different – and maybe multiple – computers.

The iPoint players will not need to use the shared folder as the files used are streamed from the iPoint server to the iPoint player(s) automatically.

When you save a new playlist with files added, the server will verify and make sure that the files can be located and retrieved from the paths specified.

4.2 iPoint server and iPoint scheduler are installed on the same computer

This simple setup does not really need a shared folder for your multimedia files. In your playlists you can use files from the local computer. The server will also be able to work correctly as also for the iPoint server process the files can be found and communicated to the iPoint players.

Note: In the event that people are uploading your multimedia files to your server computer, then again you will need to set up a shared folder as this process is taking place from remote.

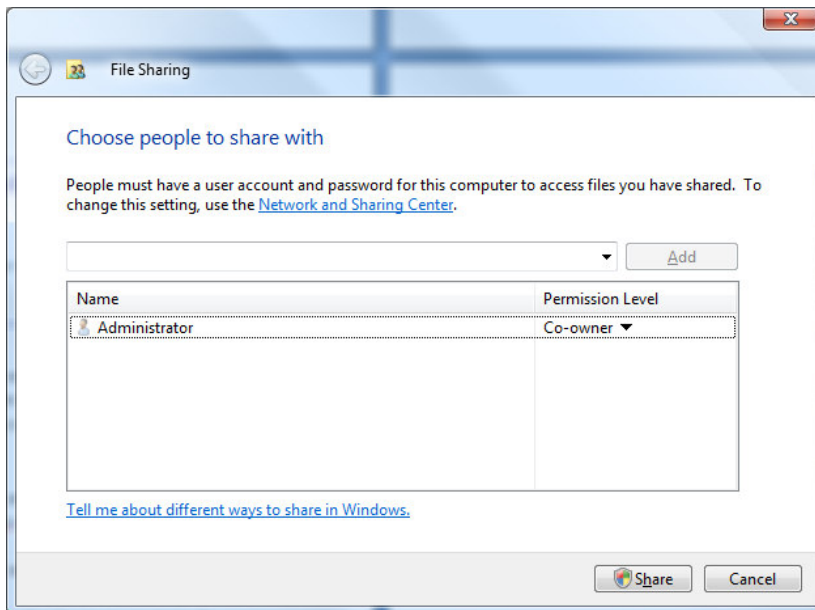
4.3 iPoint server and iPoint scheduler are installed on different computers

In the event that the iPoint server and iPoint scheduler are running on different computers, or in the event that you have multiple computers running to iPoint scheduler software, then you will need to set up a shared folder that is used when you add files to your playlists.

4.4 Setting up a shared folder

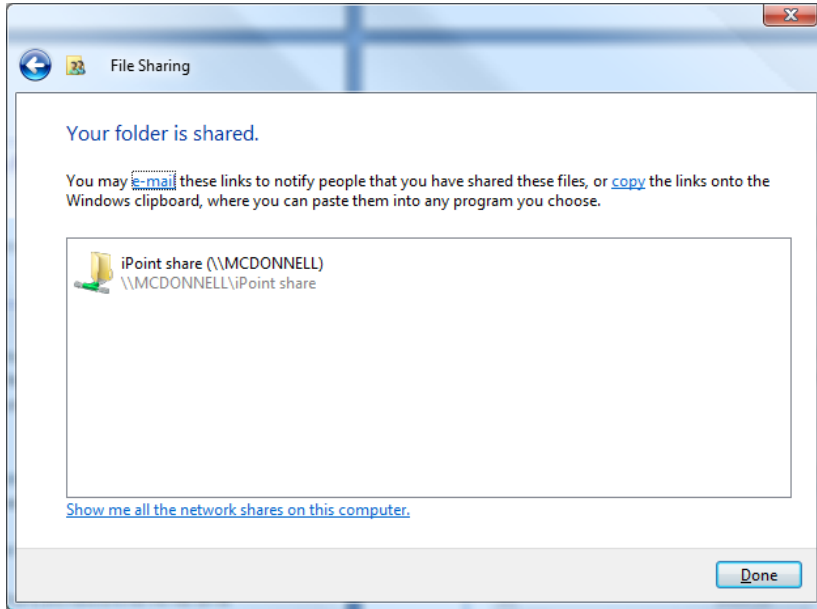
Typically your shared iPoint folder is located on the iPoint server computer or on another computer that acts as a file server. In either cases you will have to make that multimedia folder shared to be used by other users.

First create a new folder on the computer or use an existing folder. Right click that folder and choose Share from the popup menu.



Now you can add a user or a group of users to the list and set the permission level to co-owner. With this permission a given user – who is part of the list – can create, upload and delete files from the multimedia repository.

Now click Share to commit your changes.



Now you can tell your iPoint users that this folder is created as storage for all your iPoint multimedia files. People will have to upload files to this folder and when they create a new playlist, files are to be retrieved from this same location.

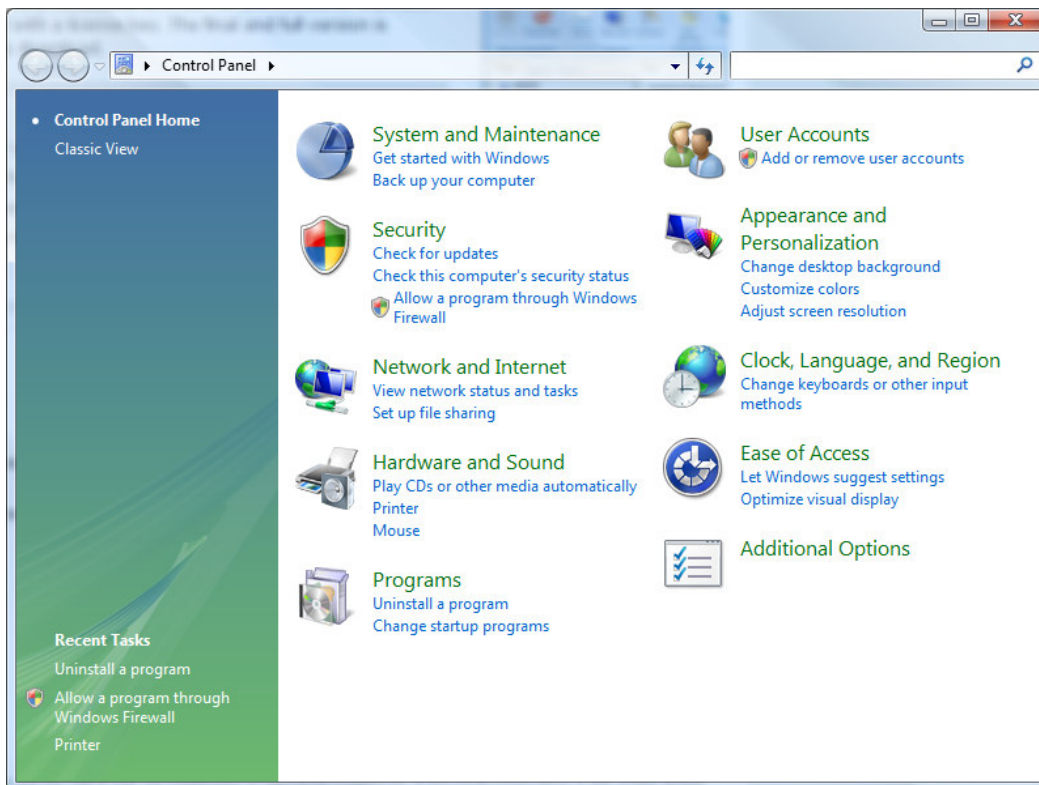
5 Logging

This topic explains where process activity information of the server is logged.

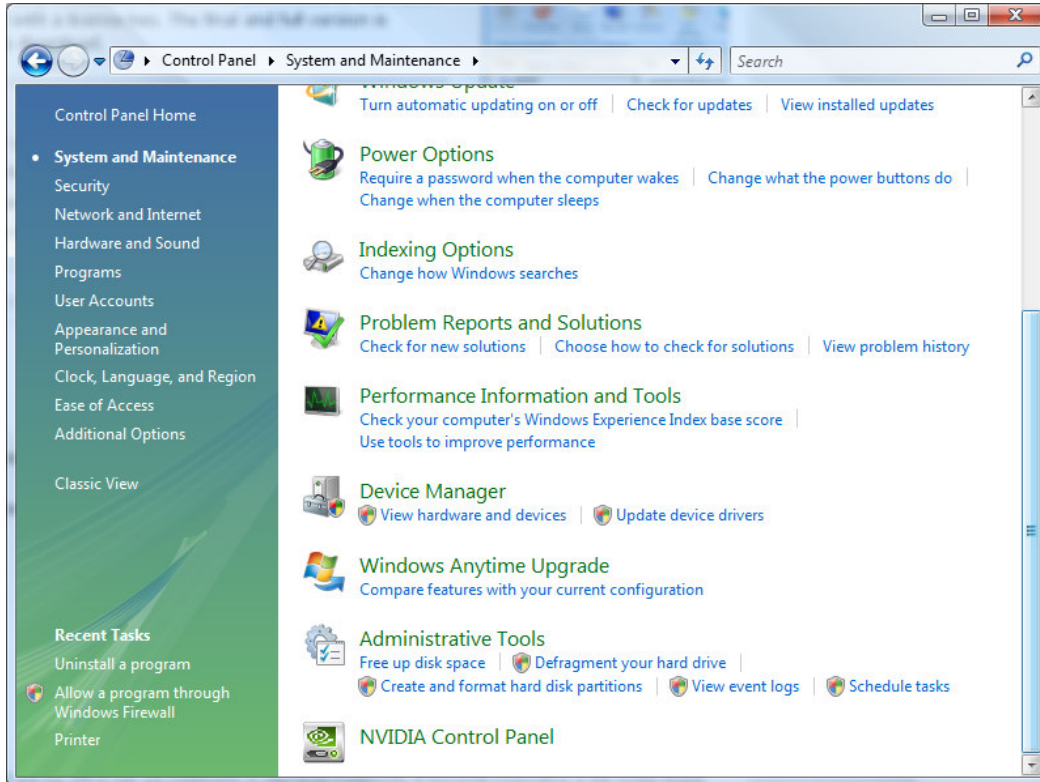
5.1 Event viewer

The server process is logging error information into your system event viewer.

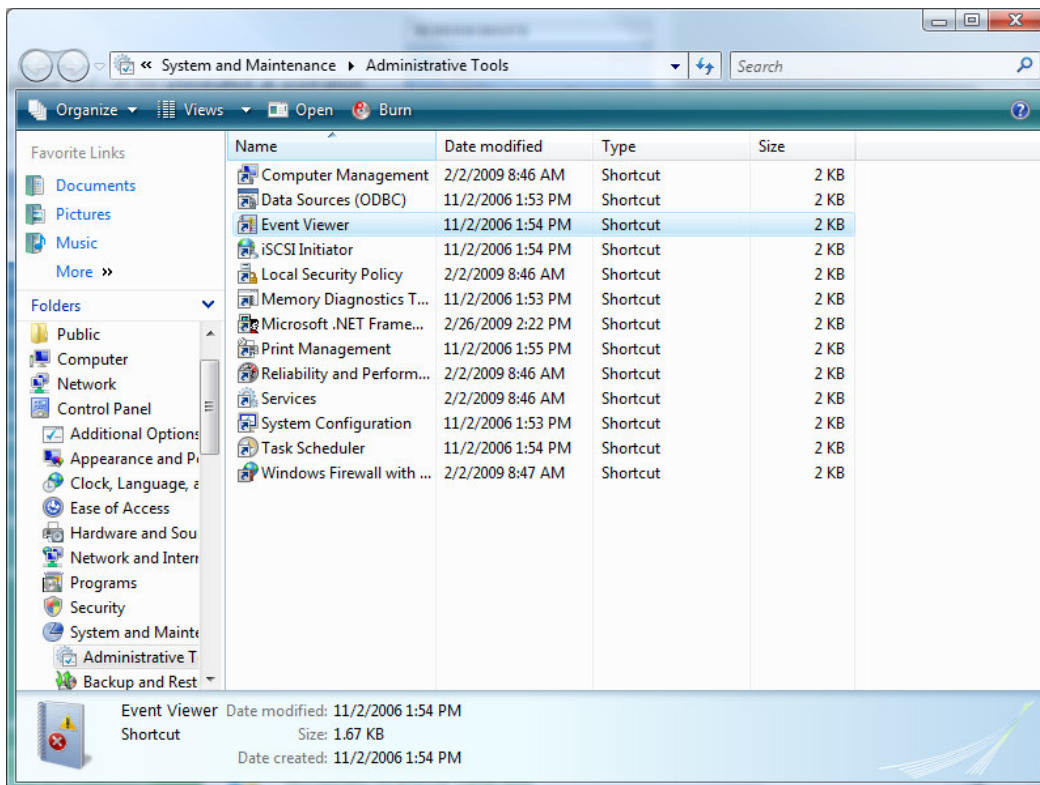
Click Start > Control Panel.



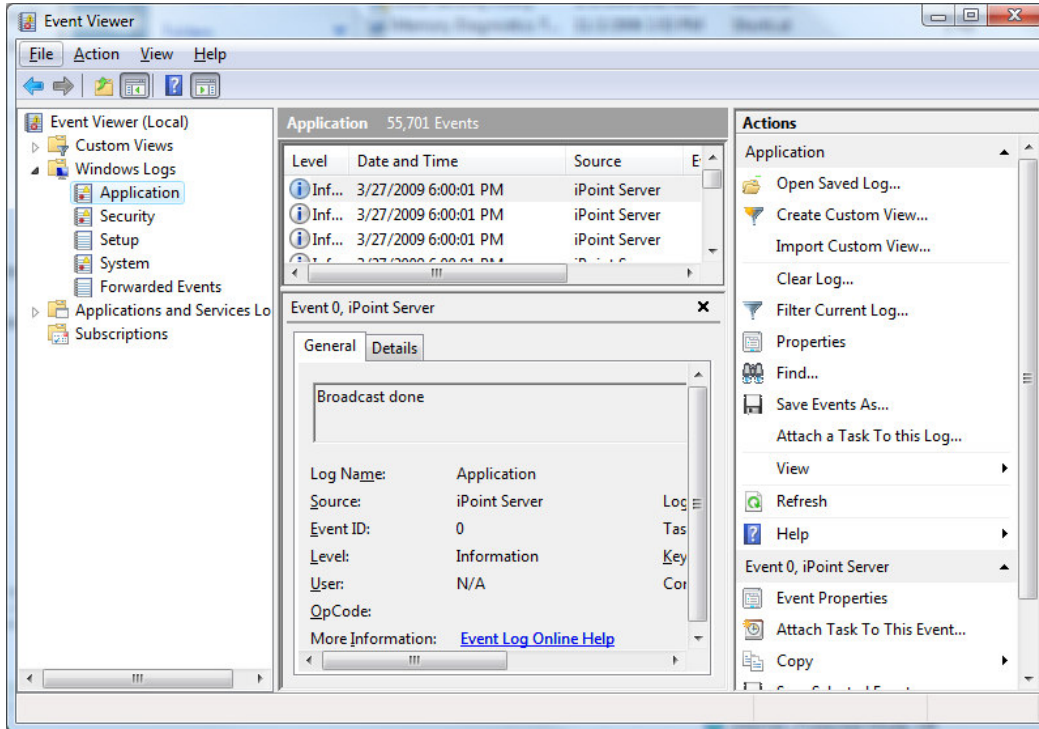
Click on System and Maintenance.



Click Administrative Tools.



Double click Event Viewer.



Navigate to Windows Logs > Application.

Here you will find informational and error entries of the iPoint server process.

5.2 Logfile

A more detailed logfile about the activity of the server is written to your file system. The location of this logfile depends on the user you are using to run the Windows service. You can verify its path in the event viewer as this path is logged when the server service is started.

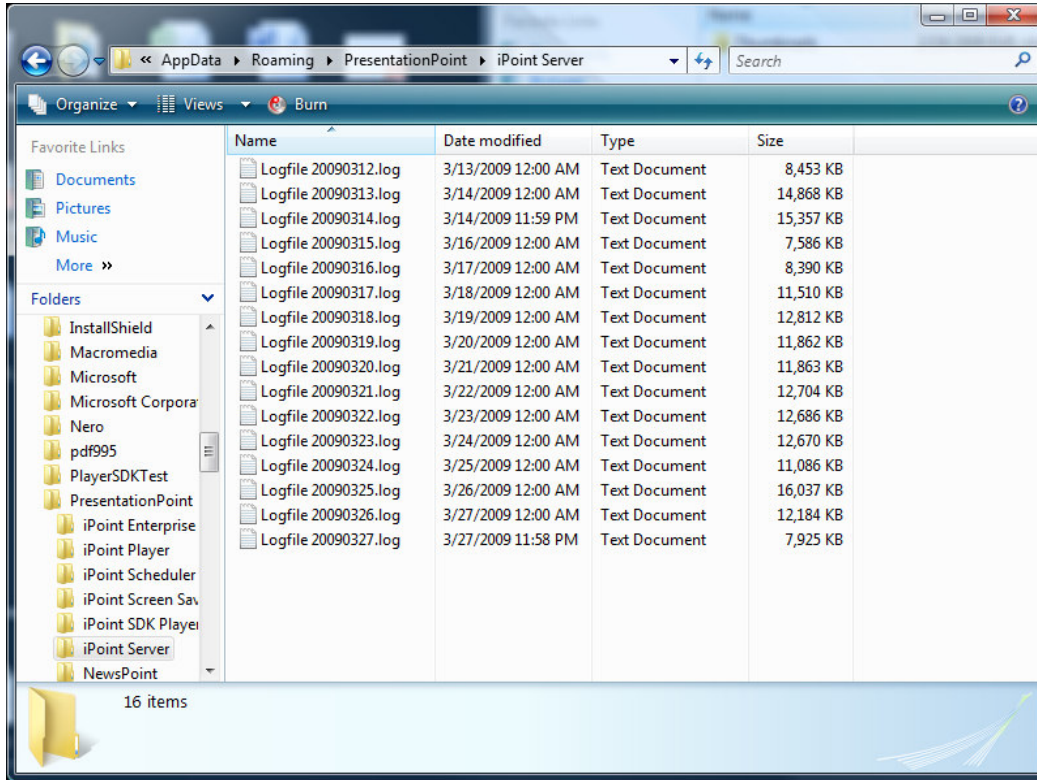
In that folder you will find a logfile for each day with a maximum of 15 days.

5.2.1 Running as local system account

If you run the service as a Local System account, this information is written in the TEMP folder location.

The default location of the TEMP variable is C:\Windows\temp.

Navigate to that folder and open PresentationPoint\iPoint Server.



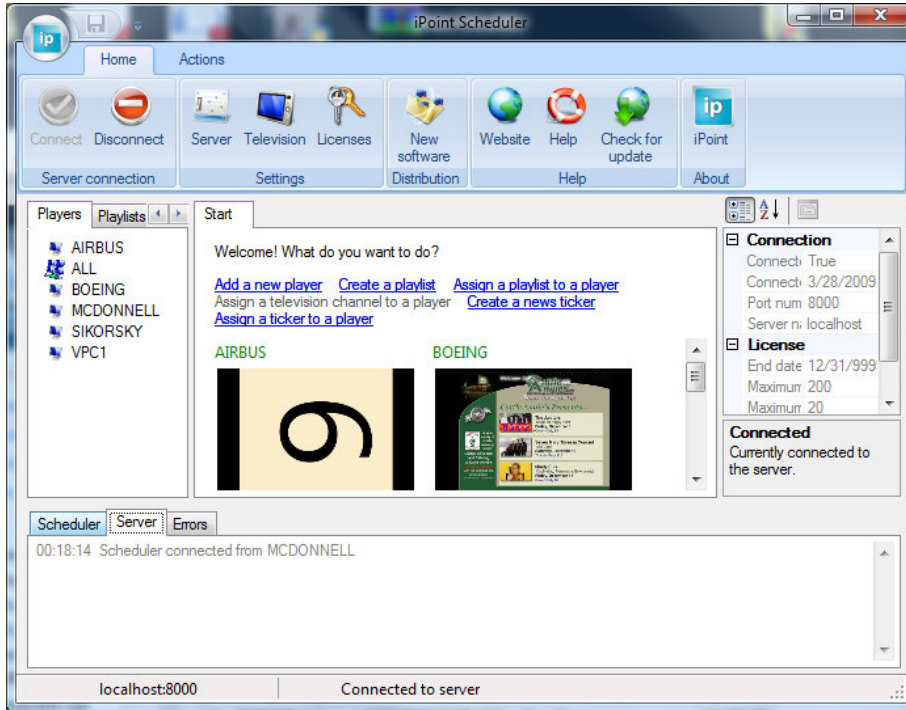
5.2.2 Running as a specific user

If you run the service as a specific user, this information is written in the TEMP folder location of this user. The folder corresponds to `C:\Users\[username]\AppData\Roaming\PresentationPoint\iPoint Server`.

Note: For older XP systems this folder location corresponds to `C:\Documents and Settings\[username]\Application Data\PresentationPoint\iPoint server`.

5.3 Scheduler

Also in the Scheduler application you can monitor the activity of the server process. Start the Scheduler application and click the Server tab at the bottom of the application. There you will find some important information about the server process.



5.4 Thumbnails

A player is regularly uploading a print screen of the active playlist to the server for monitoring purposes. The scheduler application is visualizing those images. The server is storing this information at C:\Users\[username]\AppData\Local\Temp\PresentationPoint\iPoint Server\Thumbnails. You can use these thumbnail images in e.g. your own monitoring application.

Note: For older XP systems this folder location corresponds to C:\Documents and Settings\[username]\Local Data\Temp\PresentationPoint\iPoint Server\Thumbnails.

